

### 3 Peaks in One Day

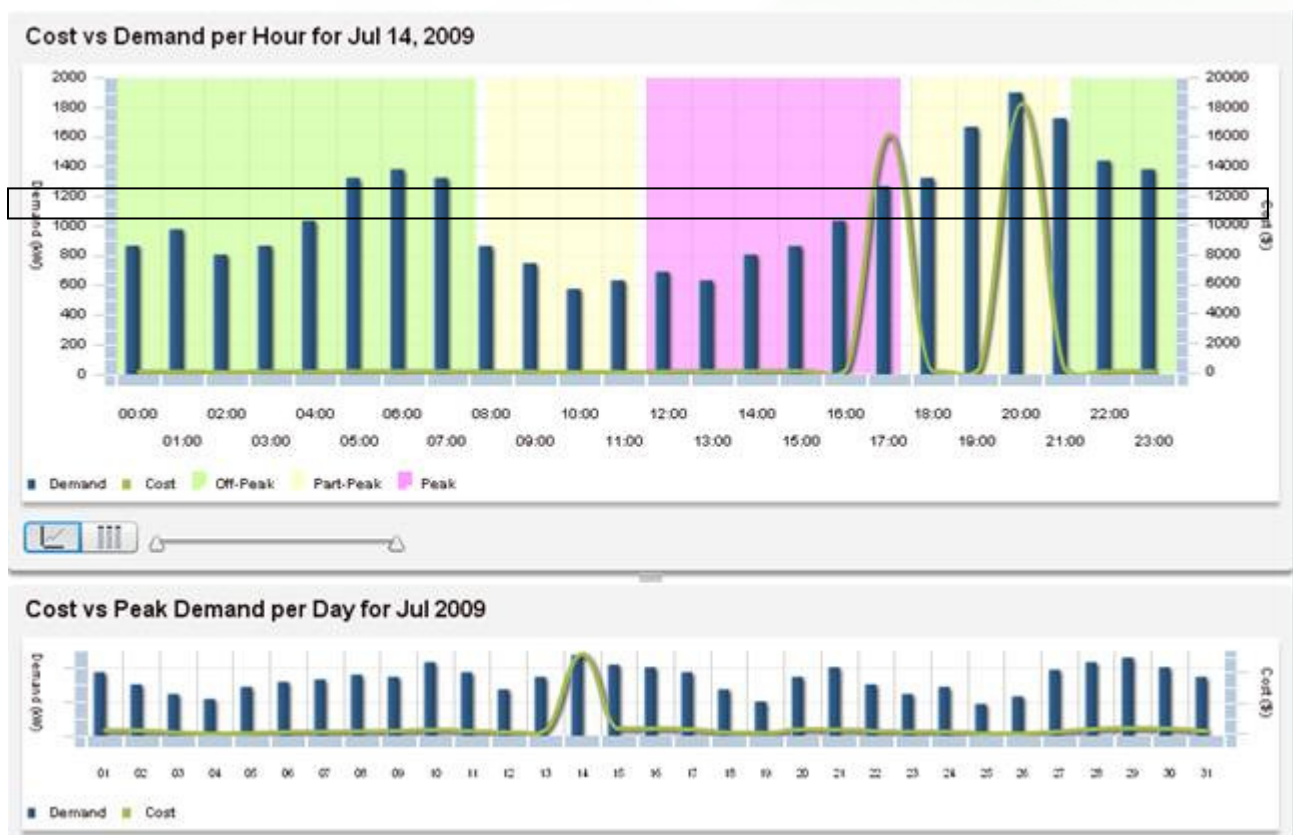
#### Case

Rarely does a manufacturer hit all three maximum demands on one day, but this client managed to do it in July. Previously the peaks were spread over 2 days. The maximum demand – summer peak charge in both May and July occurred at 17:00 (5pm), and in both cases was disproportionately high departing from its linear regression, indicating that the load did not transition linearly.

#### Lesson

Demand is increasing nonlinearly between 16:00 and 18:00, causing the customer to experience a peak charge at the end of the Peak Time of Use period. The difference is about 200kW, with only a 50kW change the next hour. If you can shift this load past 1800 (6pm) or reduce it during Maximum Demand - Summer Peak, there's a nice cost savings.

Our calculations show a \$3,000 to 4,000 cost increase per month due to this load transition; energy cost that could be saved.



Visit [HelioEnergySolutions.com](http://HelioEnergySolutions.com) for more Case Studies and Energy Solutions.